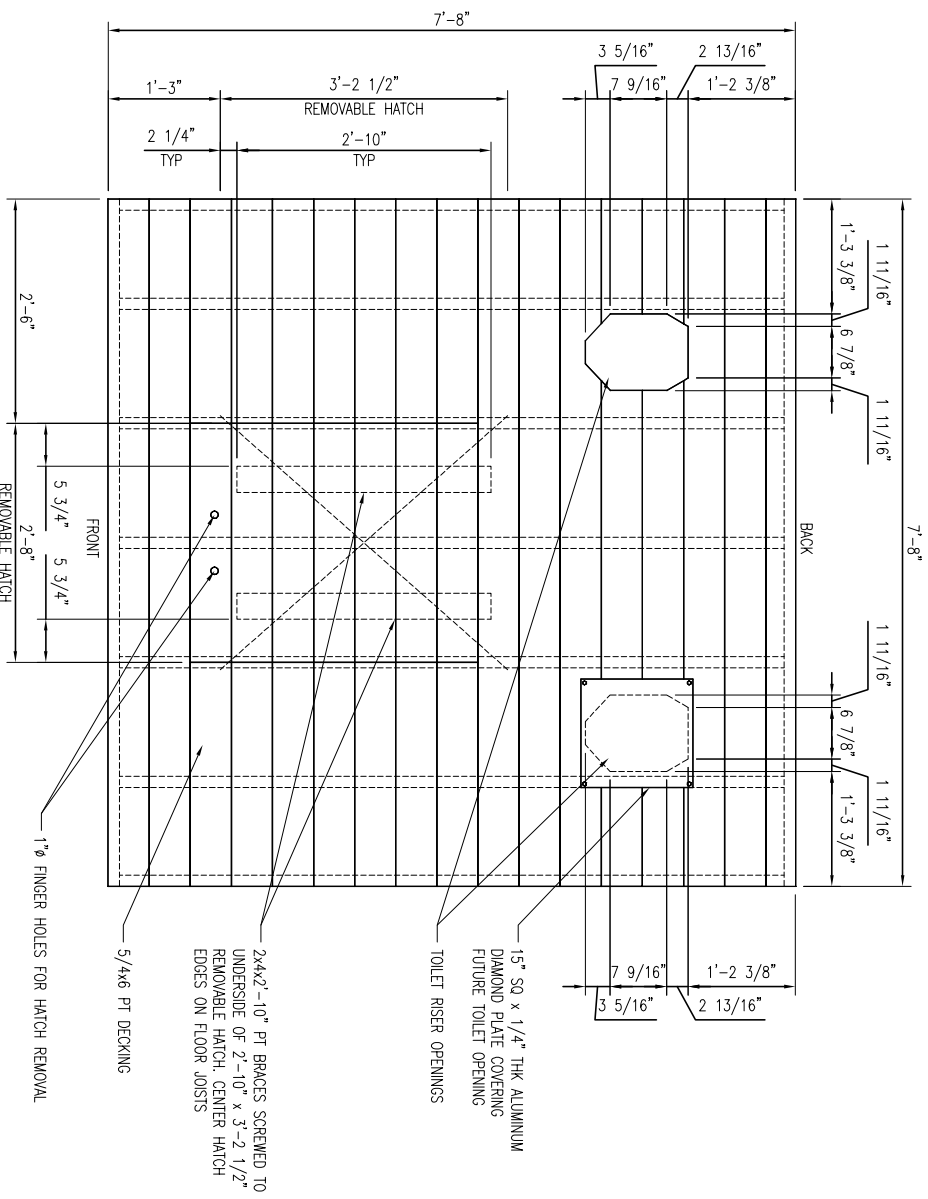
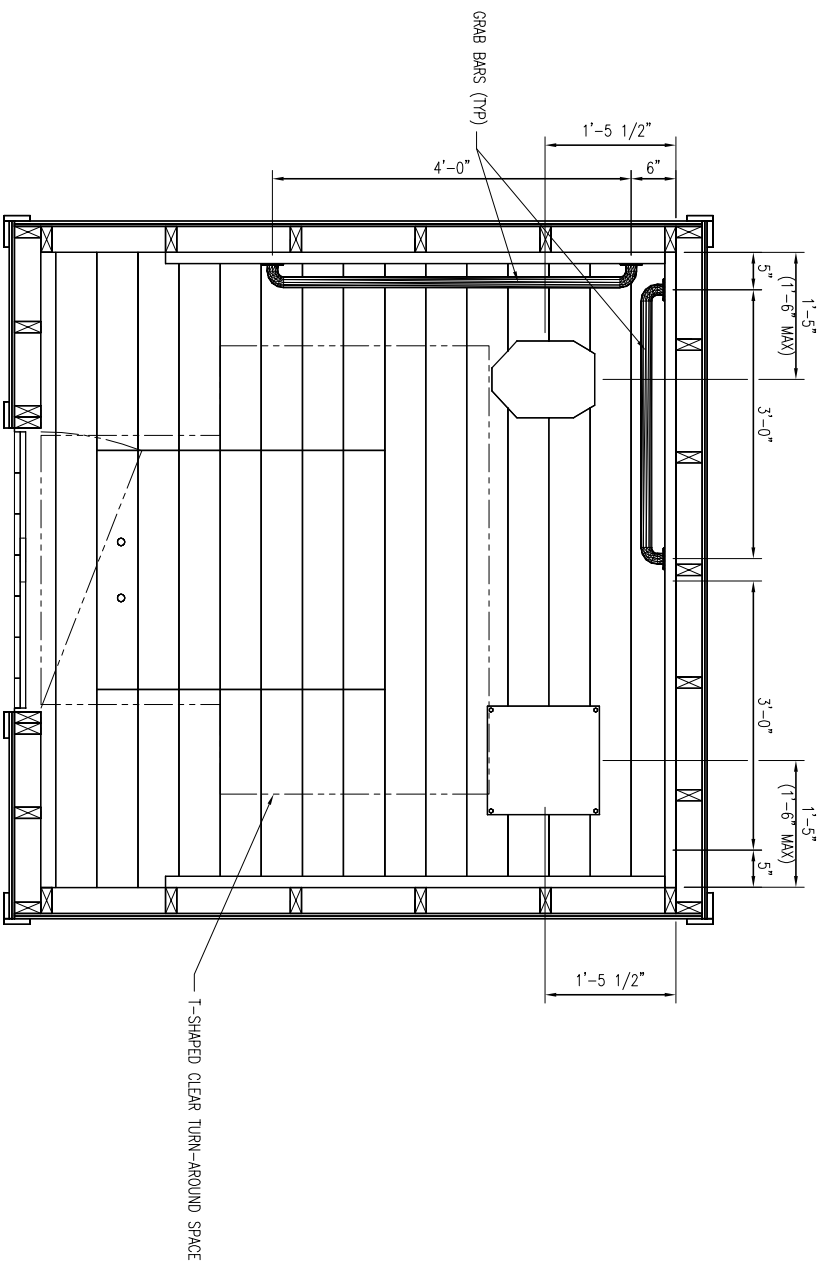


PLAN VIEW
FLOOR FRAMING



PLAN VIEW
FLOOR DECKING



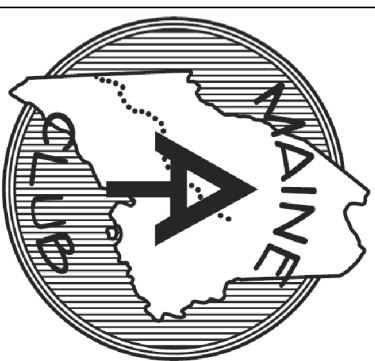
PLAN VIEW
TOILET RISER AND GRAB BARS

FLOOR FRAME AND FLOORING CONSTRUCTION NOTES

- 1) INSTALL 2 x 6 JOISTS PERPENDICULAR TO FRONT AND REAR OF PRIVY AS SHOWN IN PLAN VIEW.
- 2) TOILET RISER OPENING SHALL BE CENTERED BETWEEN JOISTS, 16" MINIMUM AND 18" MAXIMUM FROM EDGE OF INSIDE WALL. VERIFY TOILET RISER DIMENSIONS BEFORE CUTTING OPENING.
- 3) FLOOR HATCH SHALL BE INSTALLED WITH EDGES CENTERED ON FLOOR JOISTS.

FLOOR FRAME AND FLOORING MATERIAL LIST

QTY	MATERIAL
2	2 x 6 x 7'-8" PT
7	2 x 6 x 7'-1" PT
17	5/4 x 6 x 7'-8" PT
2	2 x 4 x 2'-10" PT
14	2x6 JOIST HANGERS
3 LBS	10d GALVANIZED NAILS
260	2" DECK SCREWS
1	15" SQ x 1/4" ALUMINUM DIAMOND PLATE
4	1/4" x 1-1/2" LAG SCREWS
1	TOILET RISER



MAINE APPALACHIAN
TRAIL CLUB

ACCESSIBLE
MOLDERING PRIVY

NO.	REVISION	DATE

DRAWN BY: L. CHARTER DATE: 02/01/2015
SCALE: 1" = 1'-0"
SHEET 2 OF 6 - FLOOR FRAMING

THIS MOLDERING PRIVY DESIGN CONFORMS TO THE UNITED STATES FOREST SERVICE OUTDOOR RECREATION ACCESSIBILITY GUIDELINES (FS99A6) AND TRAIL ACCESS GUIDELINES (FS1A6).