

**SIDING, TRIM, DOOR AND SCREEN CONSTRUCTION NOTES**

**SIDING AND TRIM BOARDS**

- 1) INSTALL SIDING ON SIDE AND REAR WALLS SO THAT BOTTOM EDGE OF FIRST SIDING BOARD IS 1" BELOW BOTTOM OF FLOOR DECKING (COVERING ENDS OF FLOOR DECKING).
- 2) INSTALL SIDING ON FRONT WALL SO THAT BOTTOM EDGE OF FIRST SIDING BOARD IS 1" ABOVE BOTTOM OF FLOOR DECKING.
- 3) ENDS OF SIDING BOARDS AT CORNERS NEED NOT BE PERFECT AS TRIM BOARDS WILL COVER ANY IMPERFECTIONS.
- 4) INSTALL 1x4 TRIM BOARDS AT EACH CORNER TO PROTECT ENDS OF SIDING BOARDS. ALTERNATE HALF BETWEEN EDGES.

- 1) DOOR IS CONSTRUCTED OF VERTICAL 1x6 BOARDS FASTENED TOGETHER BY HORIZONTAL 1x6 BOARDS TOP AND BOTTOM AND A 1x6 BOARD FASTENED DIAGONALLY FROM TOP CORNER TO BOTTOM CORNER. FASTEN HORIZONTAL AND DIAGONAL BOARDS ON INSIDE FACE OF DOOR WITH 1-1/2" SCREWS.

- 2) DOOR IS 1/2" SMALLER THAN FRAMED OPENING TO ALLOW FREE SWING WITHOUT JAMMING. INSERT TEMPORARY SHIMS AROUND DOOR WHILE FASTENING TO ENSURE EQUAL SPACING AROUND EDGES.

- 3) DOOR SWINGS INWARD.

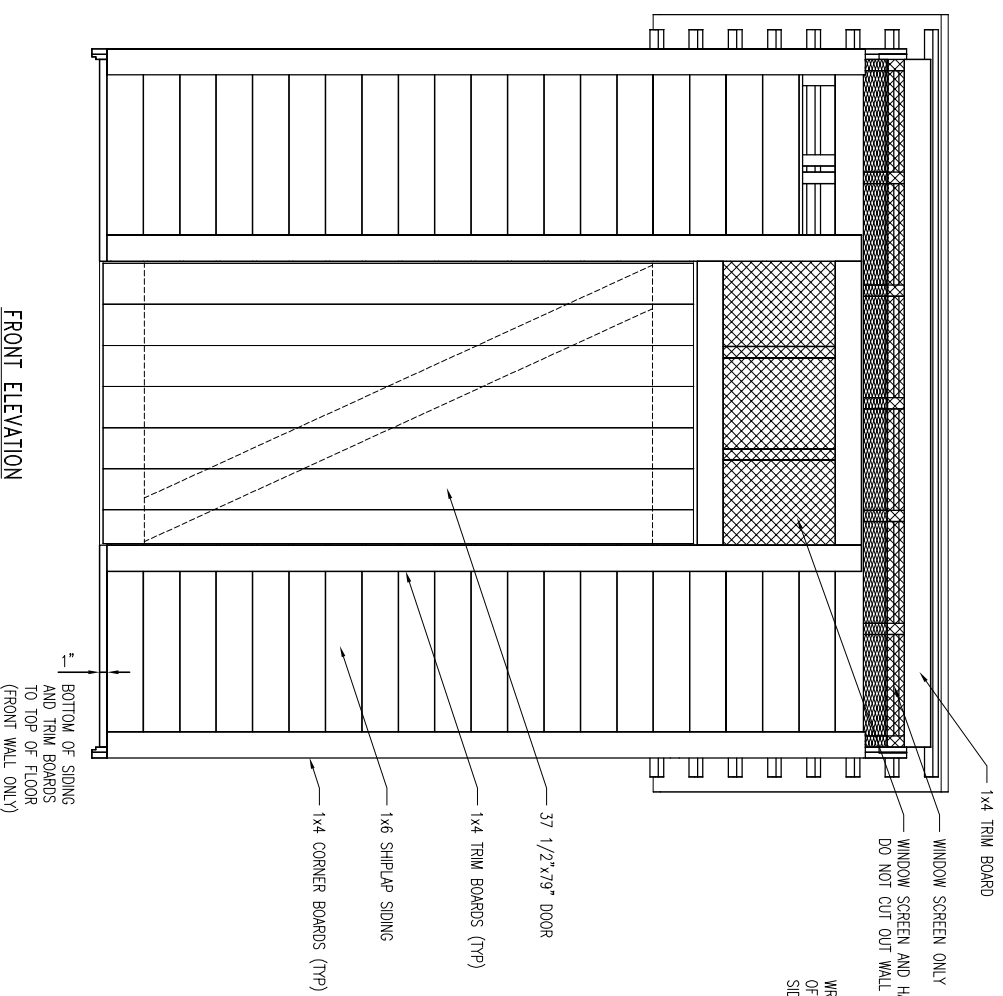
- 1) INSTALL SCREEN BEFORE LAST COURSE OF SIDING.

- 2) ATTACH SCREEN WITH STAPLE GUN OR STAPLE HAMMER THEN HARDWARE CLOTH WITH ROOFING NAILS. TRIM BOARDS OR SIDING OVER EDGES WILL PROVIDE FINAL FASTENING. ONLY SCREEN REQUIRED AROUND FRONT AND BACK ROOF RAFTERS.

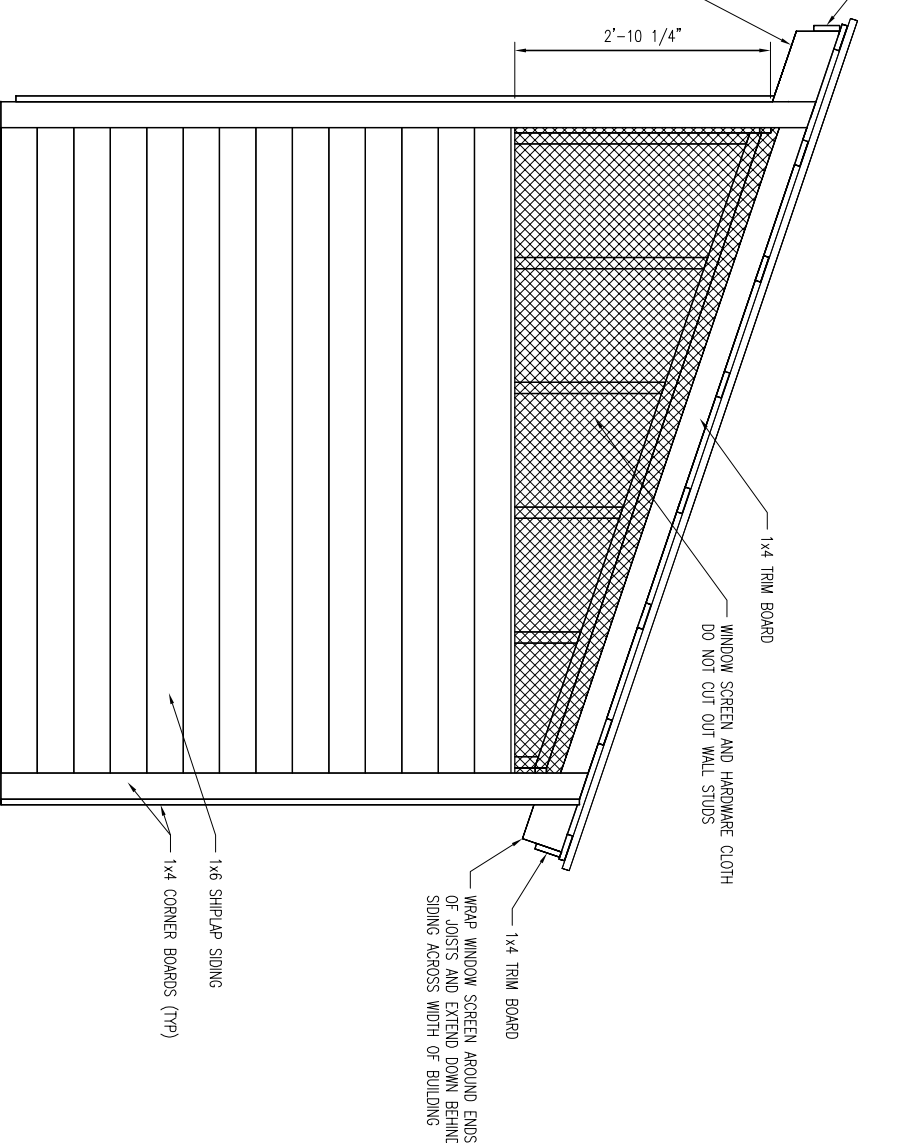
**SIDING, TRIM AND DOOR MATERIAL LIST**

QTY.	MATERIAL
75	1 x 6 x 8'-0" SHIP-LAP SIDING
9	1 x 6 x 8'-0" PINE
4	1 x 4 x 10'-0" PINE
8	1 x 4 x 8'-0" PINE
11 LBS	10d GALVANIZED NAILS
3 LBS	1-1/2" STAR DRIVE CERAMIC COATED SCREWS
2	STRAP HINGERS WITH SCREWS
2	CLOSURE LATCHES
1	36" STAINLESS STEEL GRAB BAR
1	48" STAINLESS STEEL GRAB BAR

**FRONT ELEVATION  
SIDING AND CORNER BOARDS**



**TYPICAL SIDE ELEVATION  
SIDING AND CORNER BOARDS**



**MAINE APPALACHIAN  
TRAIL CLUB**

**ACCESSIBLE  
MOLDERING PRIVY**

DRAWN BY: L. CHARTER DATE: 02/01/2015

SCALE: 1" = 1'-0"

**SHEET 4 OF 6 - SIDING AND TRIM**

THIS MOLDERING PRIVY DESIGN CONFORMS TO THE UNITED STATES FOREST SERVICE OUTDOOR RECREATION ACCESSIBILITY GUIDELINES (FSORAG) AND TRAIL ACCESS GUIDELINES (FSIAG).