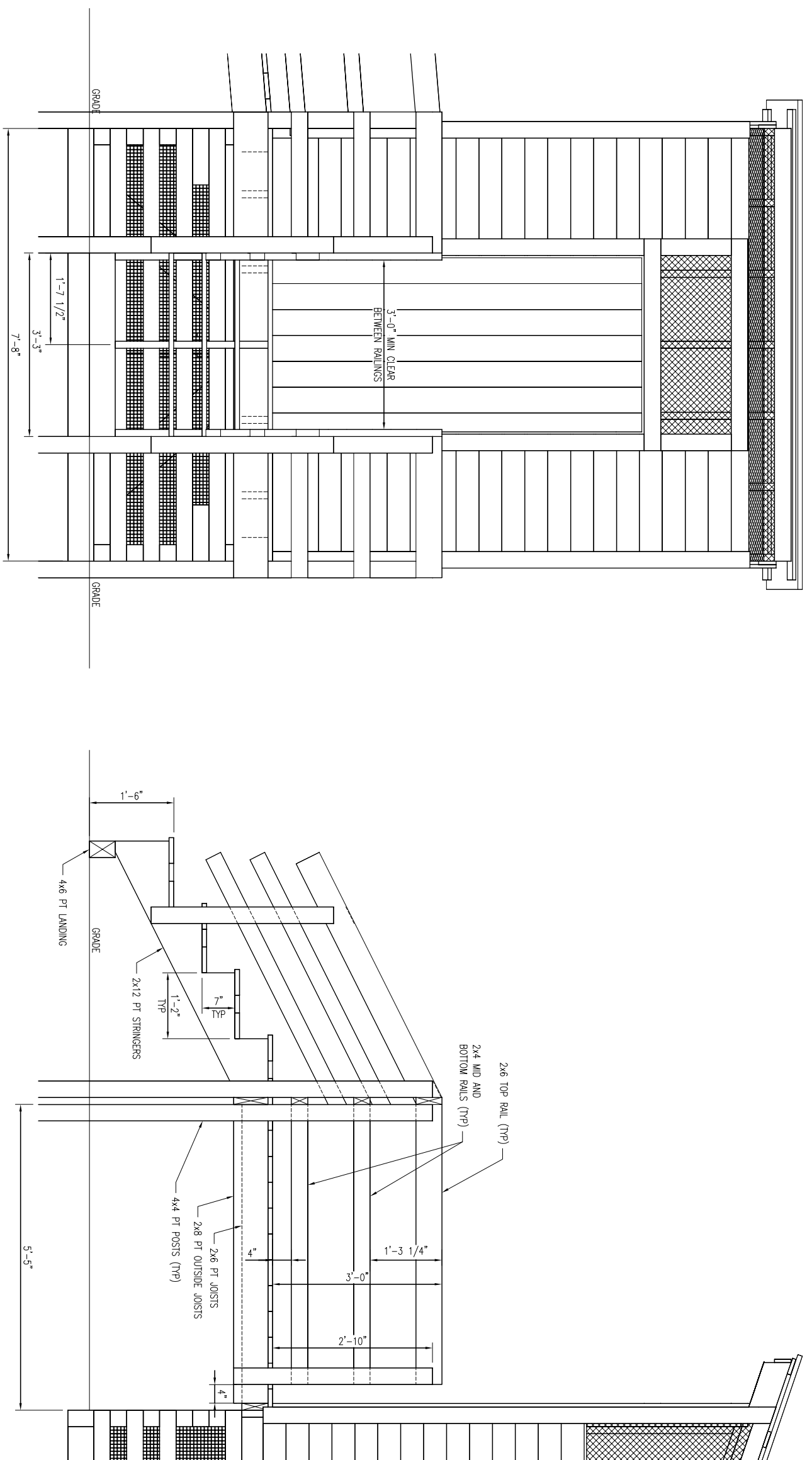


**ENTRY DECK AND STAIRS CONSTRUCTION NOTES**

- 1) FOR ACCESSIBILITY PRIVY BUILDING SHALL BE CONSTRUCTED WITH A LEVEL ENTRY PLATFORM AND SLOPED PATH NOT EXCEEDING 9-9% GRADE TO THE PLATFORM. PLACE BUILDING ACCORDINGLY TO ACCOMMODATE SITE CONDITIONS.
- 2) CONSTRUCT STAIRS TO PLATFORM IF NECESSARY TO ACCOMMODATE SITE CONDITIONS.
- 3) SLOPED PATH, RAMP OR STAIRS CAN BE TO EITHER SIDE OR FRONT OF PLATFORM DEPENDING ON SITE CONDITIONS.

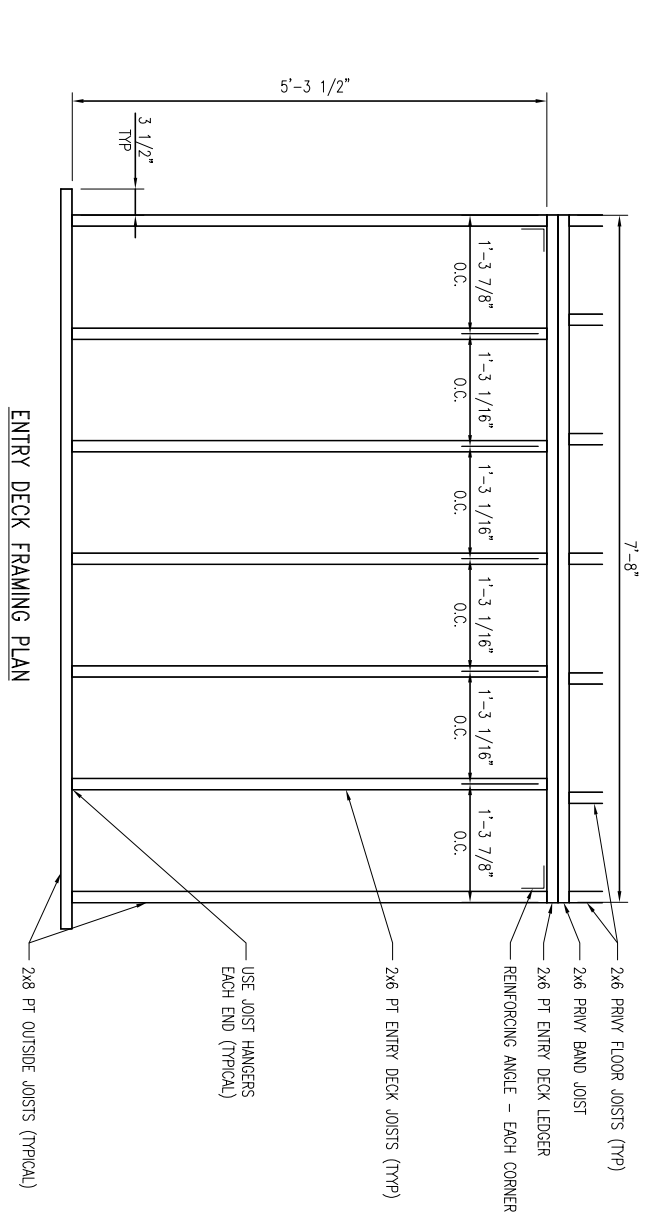
**ENTRY DECK AND STAIRS MATERIAL LIST**

QTY.	MATERIAL
9	2 x 6 x 8'-0" PT JOISTS
3	2 x 12 x 8'-0" PT STAIR STRINGERS
6	2 x 4 x 8'-0" PT RAILS
5	4 x 4 x 8'-0" PT POSTS
1	4 x 6 x 4'-0" PT STAIR LANDING
40	2 x 2 PICKETS
18	5/4 x 6 x 8'-0" PT DECK BOARDS
10	2x6 JOIST HANGERS
2 LBS	12d GALVANIZED NAILS
200	2" DECK SCREWS



FRONT ELEVATION

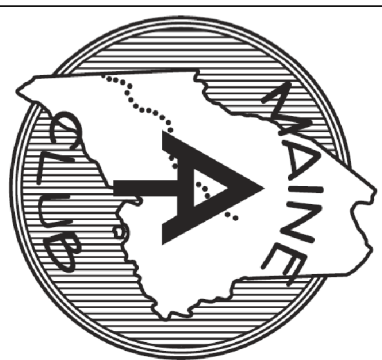
SIDE ELEVATION



ENTRY DECK FRAMING PLAN

THIS MOLDERING PRIVY DESIGN CONFORMS TO THE UNITED STATES FOREST SERVICE OUTDOOR RECREATION ACCESSIBILITY GUIDELINES (FSOR946) AND TRAIL ACCESS GUIDELINES (FS160).

NO.	REVISION	DATE



**MAINE APPALACHIAN TRAIL CLUB**

ACCESSIBLE MOLDERING PRIVY

DRAWN BY: L. CHARTER    DATE: 02/01/2015

SCALE: 1" = 1'-0"

SHEET 5 OF 6 - ENTRY DECK AND STAIRS