

MATC
Barbara Gorrill,
memberships
PO Box 55
Gray, ME 04039

NONPROFIT ORG
POSTAGE PAID
GRAY MAINE
PERMIT 55

Maine Appalachian Trail Club



The MAINEtainer

Volume XXXIII

Number 2

Spring 2010

75 Years: 1935 – 2010

You're invited to MATC 75th birthday celebration

All MATC members and their guests are invited to celebrate 75 years of stewardship of the Appalachian Trail in Maine. Learn about MATC's history and meet our new Base Camp partners, the Somerset Woods Trustees.

Dave Field and Lester Kenway remembered the 50th Anniversary in Monson to be a rather small gathering with a pot-luck lunch. "After lunch, we all marched out to work on the trail," they recalled.

This anniversary celebration will be a larger affair (we do have a larger membership) and there will be no work party requirement, but we will offer walks at the Somerset Woods Trustee's Malbons Mills Road property after lunch.

The doors will open at 10:00 AM for socializing and review of displays, photos, archival video and other historic material.

The formal program will start at about 11:00 AM. We'll meet past MATC Presidents, laugh at some good stories, listen to a guest speaker and mark the occasion with a special event.

After lunch, all will be invited to visit the future location of the Maine Trail

Crew Base Camp. It is a beautiful property situated amidst large white pines on the Kennebec River bluffs.

WHEN: Saturday, June 19

TIME: 10:00 AM to 3:00 PM

WHERE: Skowhegan Community Center

(US 2 ~0.8 miles west of the Kennebec River bridges), Skowhegan, Maine

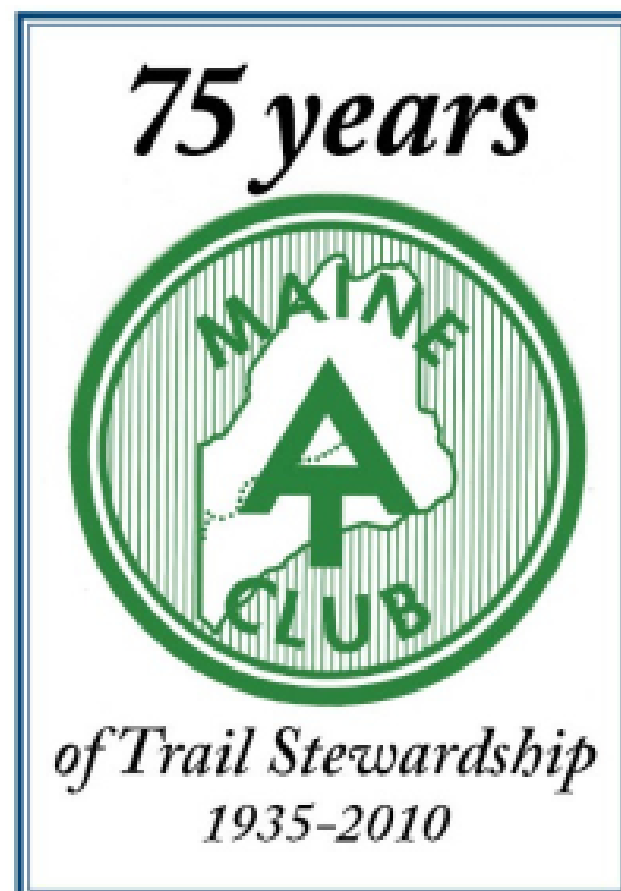
Lunch will be provided so please RSVP to Elsa Sanborn, ejask@myfairpoint.net, 207-947-2723 by June 15.

If you have an interesting or funny (& short) story to share on this occasion, please contact Ray Ronan, walkinhome1@yahoo.com, 207-892-2600 who will be coordinating the 'oral history' portion of the program.

We have come a long way since the last anniversary celebration – the treadway is protected. The trail is now all located on public land.

However, MATC has expanded duties of stewardship. We are about to embark on a new era with a permanent trail crew base camp in partnership with Somerset Woods Trustees and are facing new threats to the Appalachian Trail lands.

Come join us to celebrate this milestone of past accomplishments and future challenges.



CARE announces its program schedule

Below is the schedule for the CARE program this summer. Participation is always welcomed!

2010 CARE Season Schedule:

- Pack-in/Orientation Horns Pond Caretaker— 5/22/10 and 5/23/10
- CARE Training - 6/5/10 to 6/8/10, starting with the Pack-in for the Piazza Rock Caretaker, Saturday June 5 @ 9:00, followed by a MATC potluck, swimming and overview of the CARE program at Bill Eddy's house @ 1:00
- Leave No Trace training at Piazza Rock and vicinity 6/6/10 and 6/7/10
- Pack-in Gulf Hagas Ridgerunner – 6/12/10
- Abol Bridge Ridgerunner start date – 7/5/10
- Mid season CARE meeting @ Gorrill's camp – 7/11/10
- Full CT/RR Team Mid-season training @ Horns Pond – 7/12/10 and 7/13/10
- Pack-out Piazza Rock Caretaker – 9/25/10
- Full Team Late season meeting – 9/26/10 @ Steve Swatling's house
- Pack-out Horns Pond Caretaker – 10/16/10
- Pack-out Gulf Hagas Ridgerunner – 10/16/10
- Abol Bridge Ridgerunner last day – 10/17/10

Maintainer Needed Kennebec District

Maine Hwy. 15 to Doughty Pond Side Trail

We have a vacancy for this 1.4 mile section of the AT near Monson. Ray Ronan is stepping down after 9 years of excellent maintenance to pursue the joys of corridor monitoring more fully.

Please contact:

Peter Roderick
Kennebec District Overseer
293-2704
roderick1027@fairpoint.net



New Side Trail -- This is the sign that directs Appalachian Trail hikers to new facilities being developed by the Appalachian Mountain Club near Long Pond in the Barren Chairback region.

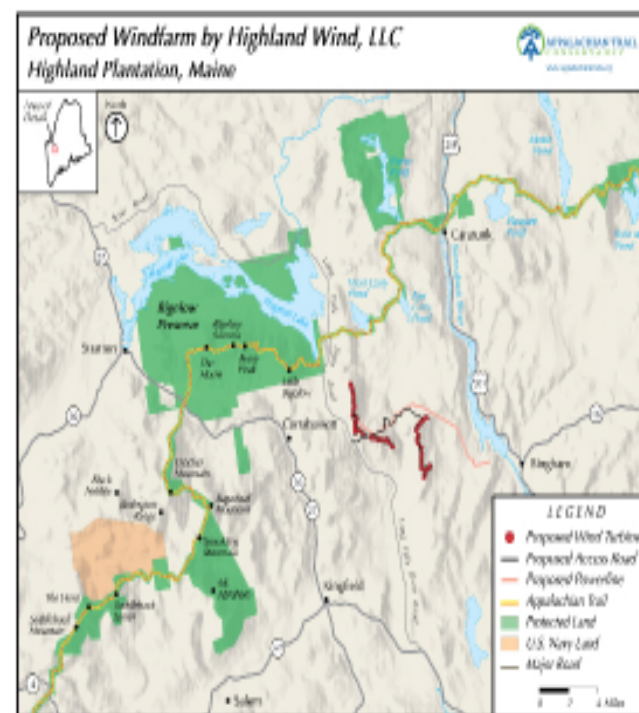
Corridor monitoring workshops begin on June 5

If you are interested in becoming a corridor monitor, want to update your corridor monitoring skills, or would just like to explore exciting new territory, join Dave Field and fellow corridor monitors at one or both of this spring's corridor monitoring workshops.

We will gather at the A.T. trailhead in Black Brook Notch (between Andover and Lower Richardson Lake) at 9:00 AM on Saturday, June 5, to walk the boundary line up towards Old Blue Mountain.

Rugged terrain, great views. The following Saturday, June 12, meet at the intersection of the Greenville-Kokadjo Road and the Frenchtown Road, just south of Kokadjo, to drive in and work on the boundary lines on the north side of White Cap Mountain.

Be sure to contact Dave at meeser3@roadrunner.com or 862-3674 to let him know that you plan to attend a workshop and to learn of re-scheduling if the weather looks really bad.



Highland Wind Project

Besides the MATC opposing the Highland Wind project, there is a newly-formed organization, the Friends of the Highland Mountains, supported by local residents and concerned citizens, who are opposing the project. They have an informative website <http://highlandmts.org> about their reasons for opposing the project. In addition, the Friends are co-sponsoring an auction in Freeport on June 5. All are invited to:

“THE BIG WIND REGATTA AND AUCTION”

Come Help Save the Highland Mountains and the Bigelow Preserve From Industrial Wind Development

When: Saturday June 5th, 5:30 – 8:30pm

Where: Harraseeket Inn
162 Main St., Freeport.

Event: Social Hour, Dinner, Speakers, Short DVD Presentation, Comedy Show and Auction

Speakers: Jonathan Carter, Steve Thurston, Bob Weingarten, Alan Michka

Short DVD Showing:

Save the Mountains of Highland, Maine
Comedy Presentation: Karen Pease of Friends of the Highland Mountains
Please come and enjoy an entertaining evening of fun. Bring your family, friends, and neighbors. Suggested donation \$10.

Co-sponsored by **The Forest Ecology Network** and **Friends of the Highland Mountains.**

Call if you have any questions.

FEN (207) 628-6404, FHM (207) 399-4850



New England Regional Partnership Committee meeting --Bruce Grant, Don Stack and Tony Barrett represented MATC at the Spring New England Regional Partnership Committee meeting held in Lowell, MA on March 27th. All of the New England maintaining clubs were in attendance on a balmy spring day at the Lowell National Historic park. ATC had a strong presence at the meeting with Dave Startzell, Executive Director, Laura Belleville, Director of Conservation and Matt Stevens. The newly appointed New England Regional Director

(to replace Jody Carton) was introduced. Hawk Metheny, currently AMC's Backcountry Management Specialist and ATC Board member will assume his new duties in June. The National Park Service was represented at the meeting by Superintendent Pam Underhill and consultant (and former ATPO staff) Carole Leoni. The listing of the AT on the National Historic Register was one of the many issues discussed at the meeting. Contact Bruce Grant, RPC representative and Stewardship Council member if you have ATC or broad trail management issues that you want raised. Tony Barrett Photo.

Kennebec District reports on another excellent year

Overseer – Peter Roderick
 roderick1027@fairpoint.net
 207-293-2704

Asst. Overseer – Craig Dickstein

The Kennebec District runs from the Long Falls Dam Road north of North New Portland to Route 15 north of Monson a total of 54.2 AT miles with an additional 1.2 miles of side trail. Included in the district are 6 lean-tos and 1 campsite plus the only ferry service on the AT.

Kennebec District Report

October 1, 2008 to September 30, 2009

There are 23 maintainers assigned in the Kennebec District currently including two organizations, Pine Island Camps and the University of Maine Outing Club. 102 volunteers reported a total of 1023 hours of work and travel time during the reporting period.

Highlights of the 2008-2009 included a major bog bridging project along the shore of West Carry Pond led by maintainer Dana Thurston which included the need to activate the often dormant MATC Navy to facilitate the transport of bog bridging material from the north shore of West Carry Pond to the south shore and the site of the work project. The project is progressing nicely and Dana hopes to finish things up soon.

Another unusual event was a workshop conducted by Lester Kenway, MATC President, dealing with chainsaw milling of planks from whole trees. The planks can be used for bog bridging projects in areas where lack of nearby roads prevents the easy transport of sawn material. The advantage to chainsaw milling is the more efficient use of trees to provide the maximum usable planks from fewer trees than ripping them in half. Those who attended learned a great deal about this technique and plan to use it at various spots along the trail where bog bridging is needed.

A third accomplishment during this year was the correcting of the sign list for the Kennebec District especially those signs near the ferry crossing on the Kennebec River. Hikers have requested more information in that area and we are responding to provide it. Louis Chartier and Dave Corrigan were instrumental in moving this project forward.

Looking ahead, Carey Kish is planning to begin a major bog bridging project on his section in the Carry Pond area this season. His section abuts Dana Thurston's and they provide support to each other in the bog bridging belt of the Kennebec District.

The UM Outing Club will be back for another season doing their usual incredible amount of work including a roof repair project on the Bald Mountain Brook lean-to. Chris Dorion is coordinating that work along with the students from Maine.

Craig Dickstein and I plan to walk the entire district this coming season to assess trail conditions

and to compile a list of any projects that might require assistance for the maintainers should they request it. The Kennebec District does not use the Maine Trail Crew as frequently as some other districts due to our generally gentler terrain and highly motivated and experienced maintainers. Still there are occasional projects that need the services of the MTC to be successfully completed. We hope to have a complete and up-to-date list of any such projects by seasons end.

Craig and I want to thank each maintainer for their continued support for the Kennebec District and the MATC. We also thank all the friends and family that join the maintainers to provide the work crews that make the AT in Maine the best part of the AT in the opinion of many hikers. Thanks to you all.



Kennebec District volunteers

Has Anybody Seen www.matc.org?

Buy a guide, volunteer,
Oh what good things you'll see here.

Look at our new web page!

Find the crew, caretakers, too,

Go to see what you can do...

It's all on our new web page!

If you haven't visited us lately, you don't know what you are missing.

Our webmaster, Dave Theoharides, has redesigned the site, posts the latest information in headline format with links to the stories, and has put two years worth of the *MAINEtainer* online.

Summer job openings are posted, the Kennebec Ferry schedule is there, report forms are available, and there is much more. Try it. You'll like it! MATC is also on Facebook. Become a fan!



*Laura Flight on Little Bigelow,
last winter.*

Tony Barrett Photo

Bigelow District faces a busy season

Upcoming projects in the Bigelow District this season include the Horns Pond caretaker pack-in during the weekend of May 22. Geoff Shadman returns for another season as Horns Ponds caretaker.

The Piazza Rock caretaker pack-in for David Gantz will be Saturday, June 5.

The Maine Trail Crew will be working for two weeks on a section of the AT just North of Cranberry Stream campsite. The first week starts on Saturday, June 26 and the second week starts on Monday, July 5. This is considered a moderate project trip by MTC standards.

There will be a bog bridging project near Eddy Pond early this season using 50 precut cedar planks. The planks will be transported by atv's along the old pond road. This site can be hiked to along the AT from Rt. 4 a distance of 3.8 miles or along the old Rock Pond trail from the Saddleback base area, about 2.5 miles.

The Spaulding privy is going to get a new moldering base with the help of the Camp Teki teenagers during the last week of June.

They will return the last week of July to help construct a new campsite along Flagstaff Lake that will be managed by Steve Swatling for the Bureau of Parks and Lands.

The new one mile section of the AT along Flagstaff Lake has been blazed and is open for hikers this season. A nice 3.5 mile loop hike can be done here through mature forest using the new trail section and the old AT section. Park along the East Flagstaff road where the AT crosses and start hiking north, cross the JT Horn memorial aluminum bridge over Bog Brook and enjoy the day!

Projects at Avery Col include another moldering privy base and tent platform repairs around mid May this year. There will need to be trips scheduled later in the season to do major clipping near the summits of North Crocker and Cranberry Peak. These sections have become overgrown with softwood branches during the past few seasons.

Additional minor bog bridging projects will be done later on the Range Trail near Cranberry Pond and on the Bigelow Firewarden Trail. A 24' section on the AT just north of the Sugarloaf cirque and a 16' section one mile South of Spaulding lean-to on the AT.

Contact me if you are interested in joining us on any of these trips and I will let you know the details as they develop. Many thanks to the Bigelow District maintainers who make these trips possible. Have a great season.

Richard Fecteau, rfecteau@hciwireless.net

Michelle tells us about first aid training options

For those members that are chainsaw certified, I would like to let you know that I am working on putting together a list of CPR and 1st aid courses that qualify for our required training.

Here is the rule:

22.48b – Qualifications:

In addition to having the applicable training and certifications listed in sections 22.07 and 22.48a, all saw operators shall be currently certified by a nationally recognized organization to render first aid and perform cardiopulmonary resuscitation (CPR). Supervisors shall ensure that saw operators receive training or retraining in first aid and CPR before certifications expire. Refer to section 52.3 for direction on the bloodborne pathogens program.

Also, I would love to hear from you as to where you found training. Do you get it at work, from another organization or on your own? How much did you pay? Did you put in for reimbursement? Remember, ATC will reimburse us up to \$60 per year for this training.

Would you be interested in an MATC sponsored class even if it meant you had to travel to it? We are discussing having a combo class that would cover 1st aid that would be geared more to the type of work we do and the type of injury we might suffer as well as CPR.

American Heart Association CPR training should provide a 2 year certificate while Red Cross is only a 1 year certificate. So you may want to keep that in mind when looking for a class. I recently found out that our local hospital offers AHA CPR classes on a regular basis.

Chris Dorion was looking for folks in the Bangor area to join him for a class in 1st aid/CPR in May. He needs 6 people in order to get a class going. You can contact him by email at cdorion@infionline.net.

Personally, I like taking a Wilderness First Aid Course (WFA). Since I lead a lot of hikes in the woods and hike away from easy access to help, I felt this would better serve my needs.

However, that is not required.

You can contact me at matc@micstan.us or 207-319-7355.

Michelle Moody
Mic and Stan Moody, Certified Sawyers
237 Foreside Rd.
Topsham, ME
matc@micstan.us
207-319-7355

Some questions and answers

Does MATC maintain all of Maine's AT?

No. MATC maintains the AT from Katahdin to Maine Highway 26 in Grafton Notch (267 miles) and over 40 miles of related side trails. The 14 miles of the AT between Grafton Notch and the Maine-New Hampshire state line, located primarily on the Mahoosuc Trail, are maintained by the Appalachian Mountain Club (AMC).

What does maintaining an AT section involve?

Trail maintainers are expected to remove footpath obstructions, such as blowdowns, ingrowth, and other vegetation from the pathway, maintain paint blazes, repair rock cairns, clear and repair waterbars, install signs, and remove trash and illegal fire rings from undesignated campsites. Prompt reporting of work done is an IMPORTANT part of all MATC maintainers assignments.

Trail/campsite maintainers agree to inspect their sections as early each spring after snowmelt as possible, and to report Trail conditions and plans for the season's work promptly to the District Overseer. A minimum of two trips, preferably 3 (spring, summer and fall) to a section is required by all maintainers.

Campsite maintainers are expected to periodically check for contamination of the water supply, trees that threaten a facility, and any other potential hazards that should be remedied, clean up around campsites, clean out and rebuild the approved fire place, remove all trash, inspect and clean out structures, and maintain a hiker register at sites with shelters. Any special work projects must be reviewed with the District Overseer.

What is corridor monitoring?

Corridor monitoring involves assessing and responding to conditions beyond the immediate trail, all the way out to the boundary line of the corridor tract, in which lies the Appalachian Trail footpath. It includes assessing activities that may be occurring just outside the corridor, or activities that may be intruding across the boundary line into the interior of the corridor. Monitors help prevent improper use of the corridor purchased to protect the trail and its surroundings.

Purchase Trail Guides, Maps, and other items from the MATC

The Official Appalachian Trail Guide to Maine

\$24.00 members, \$30.00 non-members

Qty. _____ \$ _____

Maine AT Trail Maps

\$6.00 ea. members, \$8.00 ea. non-members

Map 1 – Katahdin to South End of

Nahmakanta Lake

Qty. _____ \$ _____

Map 2 – Nahmakanta Lake to West Branch

of the Pleasant River

Qty. _____ \$ _____

Map 3 – West Branch of the Pleasant River

To Monson

Qty. _____ \$ _____

Map 4 – Monson to the Kennebec River

Qty. _____ \$ _____

Map 5 – Kennebec River to Maine Highway 27

Qty. _____ \$ _____

Map 6 – Maine Highway 27 to Maine

Highway 17

Qty. _____ \$ _____

Map 7 – Maine Highway 17 to Maine/NH

State Line

Qty. _____ \$ _____

Other MATC Items

M.A.T.C. Shoulder Patch - \$4.00

Qty. _____ \$ _____

M.A.T.C. Decal - \$3.00

Qty. _____ \$ _____

M.A.T.C. Pin - \$7.00

Qty. _____ \$ _____

M.A.T.C. Note Cards, set of 8 - \$8.00

Qty. _____ \$ _____

M.A.T.C. Baseball Cap - \$25.00

Qty. _____ \$ _____

M.A.T.C. T-Shirts – green logo on sand or tan

(we select background color according to availability)

Available in Small, Medium, Large or Extra-Large

Long Sleeve - \$20.00

Size _____

Qty. _____ \$ _____

Short Sleeve - \$15.00

Size _____

Qty. _____ \$ _____

Make check payable to the Maine Appalachian Trail Club (M.A.T.C.) and mail with this form to Barbara Gorrill, MATC, PO Box 55, Gray, ME 04039. To pay by Visa or Mastercard, fill out information below (please print).

Name _____

Address _____

City _____ St _____ Zip _____

Credit Card # _____ Exp. Date _____

Many thanks contributors, you make our work possible

Organizational & Corporate Donors

Maine Trail Crew
Department of Conservation's Recreational Trails Program - \$30,000
Maine Outdoor Heritage Fund - \$30,000
L.L. Bean Grants to Clubs - \$2,400
Caretaker and Ridgerunner Education Program
L.L. Bean - \$10,000
Quimby Family Foundation - \$10,000
Davis Conservation Fund - \$10,000
Bureau of Parks and Lands - \$6,500
The Maine Outdoor Heritage Fund - \$4,000
Baxter State Park - \$2,000

Katahdin (\$250 Or More)

Renate W. Chapman
Leon & Lisa Gorman
Thomas & Barbara Gorrill
Edward & Elaine Graham
Alicia & Dave Macleay
Ruth Reeve
Dain & Vera Trafton
Mitchell Zimmer

Bigelow (\$150 To \$249)

Kennedy & Susan Crane
Beth Cushman
John C. Everett Jr
Quentin Faulkner
Barbara & Gilbert Loo
Randi Lite & Richard Moody
Nancy P. Poore
Carol Thomas

Tim Trafford
Wayne Whitney
Milton R. Wright

Saddleback (\$100 To \$149)

Colin Beasley
Cynthia Bradley, In Memory of Frank Wihbey
George Brown
Soren H. Christensen
Stephen Clark
Blaise Desibour
Sheila Driscoll
David Dumont
Jonathan Ellis
Mr. Donald Esson
Wayne Gallant
Mark & Jane Gilmore
"Gypsy Bones 95"
James & Mary Hutzler
Donald Kirkland
Leslie P. Kozak
Sharon & Thomas Lewis

Benjamin Lund
Arnie & Liza MacDonald
Brian Milliken
Ken Morgan
Frederick Morrison
Bill & Beth Muldoon
Andrew Noyes
Donald & Heather Parker
John B. Phillips
Pine Island Camp
Gregory & Catherine Sanborn
Elsa Sanborn
David Scribner
John Senior, In Memory of Frank Wihbey
Paul & Cynthia Shumpert
Mark Simpson
Dr. & Mrs. Glenn Smith

Crocker (\$50 To 99)

Emory W. Ackley
Michael Atkin
Phyllis Austin
Robert Bass Jr
Keith Chanoch & Caren Bateman
Thomas Bennett
Dot Blanchard
Bill & Kathy Brittain
David & Jeanne-Marie Brookfield
Russell Brown
Susan & Robert Bulay
David Wright & Carol Cifrino
Janice Clain
Brenda Clarkson
Oliver K. Compton III
Russell M. Cone
Timothy Craig
Dick & Gale Davidson
Frank Deland
Ronald Dobra
Richard Doucette, In Memory of Michelle Smith
Peter & Alice Duston
Jan & Bill Eddy
Chris Elliot
David Field
K. Fox
Steve & Sarah Gaffney
John Geyster

Royce Gibson
Roger Gilmore
Abebe & Olga Hailye
Leslie Harding M.D.
Stephen Hastings Family
Dennis Brown & Raquel Hernandez
Michael Hill
Jon Huntington
Richard Jackson
Bob Janukowicz
Patricia Joyce
Martin Keith
Peter & Carol Kruse
Carson Kurtz-Rossi
Robert Gill Lathrop
Madelyn Linscott
James Lowe
Bob Lubberman
Robert J. Marchand
Keith Martin
Phil Mayhew
Robert McGrath
Raymond A. Merkh Jr
"Morph GA-ME 03"
Barbara Nash
John Nute
Tim Obukowicz
Laurie O'Higgins
Robert R. Ormiston
Rick Ostheimer
Catherine Paris
Linda Patton, for the Beverly "Maine Rose" Hugo Fund
Andrew Peake
Larry Perkins
Elaine Peterson
Lena Phillips
Arthur & Deborah Pierce
Wallace Pinfold
Pleasant Mountain Inn "Pondwater"
Joan & Tim Porta
Donald Putnam
James Rausch
Pat Reidman
Lisa Richard
David Robinson
Bernard Ross
Carl Saldinger
Frank Sargent
Tim & Dianne Shaw
John & Annette Sherden, GA-ME 2000

Don Stack
Cathleen Staehli
Richard Stanley
Gus & Jan Stringos
M. Bryan & Robert Terry
The Prudential Foundation Matching Gifts
Town Of Carrabasset Valley - Wilderness Camp
V. Gregory & Louise Tracey
Hon. Howard E. Vanbenthuyesen
Anthony Waraskevich
Lyn & Debbie Whiston
John Whiting
Wilson
Barbara Winterson
Baldpate (\$30 To \$49)

James Adelson
Janice Adler
Adam Jared Apt
Joseph Bahr
Bob Ball Jr
Anne Barrows
Raymond & Elizabeth Bell
Jay Bensusan
Morton P. Berenson, M.D.
Dan & Jen Bernier
Sarah & Bill Brown
Nancy Fischer & Peter Carey
Wally Chambers
Paul Gies & Kenlyn Clark
John E. Crouch & Poppy Conner-Crouch
Peter Crane
Stelita Cronin
Douglas Dolan
Wendy Dudas
Larry Ellison
Judith Falk
Lynn Farnham
J. Herbert & Sharon Fithian
Laura Flight
Roderick Forsman
Tim Fortune
Thomas Fraser



Chainsaw Safety Training -- A two-day Chainsaw Safety Training workshop was held in mid April with 10 participants. A week later a one-day Recertification workshop was held. Pictured are the four recertification participants with the instructor (left-to-right: Dana Hall, Lester Kenway, Tony Barrett, Chris Wentworth & John Towey). Thanks to Parker Lumber Company and safety instructors, Lester Kenway and Paul Sannicandro for the Spring MATC Chainsaw Safety Training workshops. If your Chainsaw certification has expired or will expire in 2010, please sign-up for the October 2-3 Workshops. If you currently hold an "Intermediate Sawyer" card, you can recertify with just the 1-day workshop to be held on Saturday, October 2.

Continued on page 7

Scott Gardner
 Patrick Guley
 Ned Hamara
 Philip Harmon
 Stephen & Kimberly Hastings
 Peter & Meghan Hedrich
 James Henderson
 Trevor Herrick
 J. Thomas. R. Higgins
 Stephen Hoffsis
 R. Howe
 Val & Sam Hudspath
 Robert & Robin Jenkins, Jr
 Kathleen & Donald Jones
 Clifton Kangas
 Stephen & Lauriejane Kelley
 Andrea Kendall
 Mike Kociela
 Joel Lanz
 Mike Hill & Melody Laroche
 "Lebowski"

Bruce Lindsay
 William & Mary Linz
 Donna Logan - "Signage"
 Stephen J. Maguire
 Dale & Lorriann Mahan
 Pat & Bruce Mason
 Patricia Matulaitis
 Peter & Barbara Mcardle
 Felix J. McGillicuddy
 Mike & Kelli McGrath
 Zaki Nashed
 Jeffrey Nason
 Paul Nielson
 William Novoa
 Roger Lee & Gail O'Donnell
 Carl Olender
 Greg Pargellis
 Jim Peasco
 Adam Peckens
 Dennis Pednault
 Alexa Pezzano
 Richard Picard
 William Plouffe

Becky Pierce & Michael Prokosch
 William Rich
 Nina Rogers, on behalf of the McGillicuddies
 Joseph & Madaline Rondeau
 Del Ruckle
 Paul Ruopp
 Sally Sairs
 William Abrams & Julie Salamon
 Ann Schoenthaler-Ervin
 Matt Schroeder, on behalf of Loren & Betty Schroeder (The Kansas Kids)
 Carl & Faith Scovel
 Ralph & Colina Seeley
 Gary Serra
 Mark W. Sleeper
 John & Linda Smidt
 Maxelle Smith
 Helene Poulin & Thomas Spring Jr

Jim Steinjann
 Caroline Swett
 BobThompson Jr
 Donovan & Cynthia Todd
 Frank & Barbara Traver
 David & Patricia Vachon
 Frank & Marilyn Volpi "Waffle"
 Ted Walworth M.D.
 Richard C. Ware
 Brian Warner
 Tony Waters
 Eric Shaw White
 Jeff & Sue Williams, on behalf of the McGillicuddies
 Peter & Laurie Wolfe

Trail Magic (\$1 To \$29)

Thomas Abdenour
 Dirk Anderson
 Jean & Clif Andreasen

Robert W. Andrew
 Bruce Ardia
 Jeffrey & Shirley Arsenault
 Phyllis Austin
 Bradley & Linda Baker
 Edward P. Bannon Jr
 Ernest M. Berube
 Joseph R. Biegen
 Carsten Bjornstad
 Michael Blais
 Ruth Pease & Gregory Blanchette
 James E. Bodmer
 Burnell Bouchard
 Ken Byerly
 John Carney
 Sarah Carpenter
 David Chamberlain
 William & Marta Clough
 Bob Corya
 James Cossaboom
 Joe Coughlin
 Greg & Gina Cyr
 Edgar Darsey
 Mr. "Fred" Davis
 Sondra & Craig Davis
 Diane P. Dimartino
 Mary Domanski
 Wendall & Paula Douglas
 J.H. Eckert
 Ricky & Mary Faloon
 Sam Farrington
 Lloyd Ferriss
 Flying Moose Lodge
 Ted Foden
 Steven French
 Linda Fyffe
 Philip & Mary Gallagher
 James Gerthman
 John Paul Given
 Leonard Guralnick
 Richard Gutmacher
 Ardis Hacker

Raymond Heaton Jr
 Michelle Curtain & George Hillman
 David Hodgkins
 Kathy & James Hohenstein
 Elaine Hokansson
 Marshall Hoyt
 Forden & Priscilla Hughes
 Richard & Jean Krohn
 Stanley Kruszewski
 Kathie Laug
 George Lowry
 Jim Malley
 Doug Mayer
 Michael & Kelly Mcquarrie
 Kenneth Morgan
 Rebecca Morin
 Penny Watson & Linda Morrisette
 Ferrell & Ivy Moultrie
 Norman Moyer
 Erick Myhrer
 John W. Neff
 A. J. & Dorothy Nepshinsky
 Alfred Obrist
 Jeffrey Peters
 "Pi & K'ache"
 PJM
 Joel Rauber
 Rodney Redding
 Carrington Rhodes
 Joleen Rice
 Sara G. Richter
 Peter & Janet Roderick
 Jeanette Russell
 Mitsuru Saito
 John Scott
 Priscilla Seimer
 Jill Rosenthal & George Shaler
 Robert Shillady
 Martin Silman
 Joyce Smith
 Dan Solomon
 John & Eileen Stencil
 Frank Tarzia
 Ray Taylor
 The Lowries
 The White Wolf Inn
 Roland & Donna Wales
 Rev. Dr. Heather Warren
 Russell & Phyllis Weber
 Matt Welch
 Diane Whiteside-Peck
 John Wilson
 Winona Camps
 Charles B. Woodman
 Howard & Flora Woodside



Winter Social -- The Winter Social attracted about 50 MATC members and guests to the Freeport Baptist Church on February 20th. Bruce Grant arranged for the showing of the National Geographic film about the Appalachian Trail before dinner. We knew the video footage was current because the Katahdin Terminus sign in the film was the new version just installed last July. The after-dinner featured presentation was a video and slide show about the International AT presented by Dick Anderson. Thanks to all who provided the delicious food and to Dick Anderson for hosting the social again in Freeport (and for his excellent chowder)

The MAINEtainer

is the newsletter of the Maine Appalachian Trail Club. Opinions expressed herein do not necessarily reflect the views of MATC, its members, officers, or directors. *The Mainetainer* is published five times a year. Our mission as a club is to construct, maintain, and protect the section of the Appalachian Trail extending from Katahdin to Route 26 in Grafton Notch, and those side trails, campsites, and shelters accepted for maintenance by the club. We seek to make accessible for hiking the wild region of Maine through which the trail passes. *The Mainetainer* welcomes letters, feedback, and information from members and friends of the trail. Send your comments, photos, and information to:

Bob Cummings
616 Main Road
Phippsburg, Maine 04562
drummor@gmail.com

MATC Executive Committee

PRESIDENT: Lester Kenway, 15 Westwood Rd., Bangor, 04401-8087, 207-947-2723(h), 745-8826(cell)
trailser@myfairpoint.net

VICE PRESIDENT, Tony Barrett, 185 Long Pt. Rd, Harpswell 04079, 833-0939,
abarrett@suscom-maine.net

SECRETARY: Janice Clain, PO Box 89, Levant, 04456,
jclain@aol.com, 884-8237

TREASURER: Elsa Sanborn. PO Box 8087. Bangor, 04402-8087, 207-947-2723,
ejask@myfairpoint.net

CORRESPONDING SECRETARY: Steve Clark, 599 Shapleigh Corner Road, Shapleigh, ME 04076, 207-636-1769(h)
Clarkbooks@mtetrocast.net

OVERSEER OF LANDS: David B. Field, 191 Emerson Mill Rd., Hampden, 04444, 862-3674, 852-7644(c),
meeser3@roadrunner.com

OVERSEERS OF TRAIL

KATAHDIN DISTRICT: Rick Ste. Croix, 17 Kenneth St., Augusta, 04330 621-1791,
ricknrachel@local.net

WHITECAP DISTRICT: Julian Wiggins, 79 Bennoch, Rd, Orono, 04473, 975-2011,
julianwiggins@gmail.com

KENNEBEC DISTRICT: Peter Roderick, 1027 Watson Pond Road, Rome, ME 04963. 293-2704,
Roderick1027@myfairpoint.net

BIGELOW DISTRICT: Richard Fecteau, 284 Ramsdell Rd., Farmington, 04938, 207-778-0870,

rfecteau@midmaine.com
BALDPATE DISTRICT: Tom Gorrill, 27 Wildwood Ln., Gray, Maine 04039, 657-4249(h), 657-6910(w),
tgorrill@maine.rr.com

ATC New England Office, Kellogg Conservation Center. PO Box 264, South Egremont, MA 01258, 62 Undermountain Road, Great Barrington, MA., 01230 413-528-8002

DIRECTORS

Dennis Andrews, 87 Gage St Apt 3, Augusta, ME 04330-6451, 215-7005, bostondork@roadrunner.com

Bob Cummings, 616 Main Rd., Phippsburg, 04562 443-2925,
drummor@gmail.com

William Eddy: PO Box 1011 Rangeley, 04970-1011, 864-5782,
eddy52@myfairpoint.net

Steve Gaffney, 161 Bob Road, Vassalboro 04989, 624-6088 (w),
soggycarhartts@hotmail.com

Bruce Grant, 396 Board Eddy Rd., Dover-Foxcroft, 04426, 564-3098, 343-0918(c)
brucegme@localnet.com

Willard Millis (Bill), 421 Azalea Lane, Sidney, 04330, 465-7038,
mbm@airalink.net

Craig Dickstein, Box 128, Caratunk, 04925-0207 207-672-4983,
craig.donna@wildblue.net

Donald Stack, 11 Patten Farm Road, Buxton, 04093, 207-929-5773, 207-749-0370 (c), 883-8155(w),
Donstack@sacoriver.net

CLUB COORDINATOR, Holly Sheehan, 231 Maine Ave. Portland, 04103, (207) 615-5794, backup phone, (207) 400-6352
matc@gwi.net

End of year fund drive possible

MATC trail crew base camp planning well underway

The newly established Base Camp committee has already met three times in 2010 and is making progress on a number of fronts.

The featured guest speaker at this year's Executive Committee January workshop was Pete Antos-Ketchum, the Director of Stewardship & Facilities Manager for the Green Mountain Club. Pete gave an excellent slide show about CMC's experience in building an energy efficient facility — which has provided inspiration for MATC's work.

The committee has been reviewing design guidelines, surveying the property for road access and utility locations. The lease agreement with Somerset Woods Trustees is under going final legal review and is planned to be signed by the 75th Anniversary celebration on June 19.

The committee will be selecting an architect to assist with building plans and commencing a capital campaign for the construction of the base camp buildings later in the year.

Invite a friend to join MATC

Please check the membership category and the amount of contribution you wish to make.

Individual (\$15) ____ Family (\$20) ____ Organization (\$25) ____

Additional Contribution _____

Name _____

Address _____

Town _____ State _____ Zip _____

Telephone _____ Email _____
(both optional)

Family member names for membership cards

Check activities of special interest:

Trail Maintenance ____, committee work ____, Other:

Send form or just a note with your dues or contribution to:

**Barbara Gorrill, MATC,
PO Box 55, Gray, ME 04039-211**